



Figure A

Front

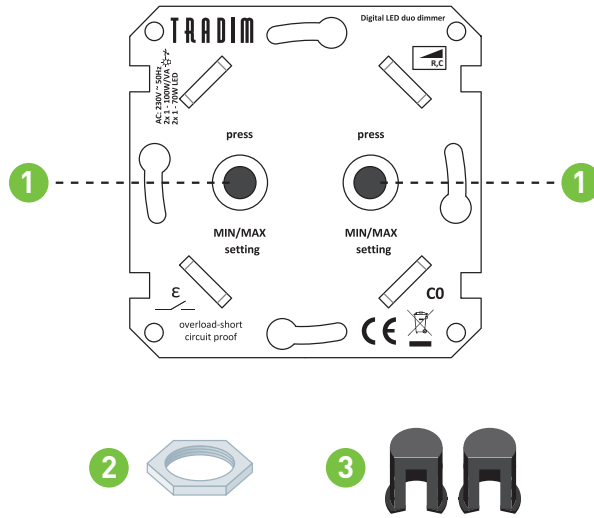
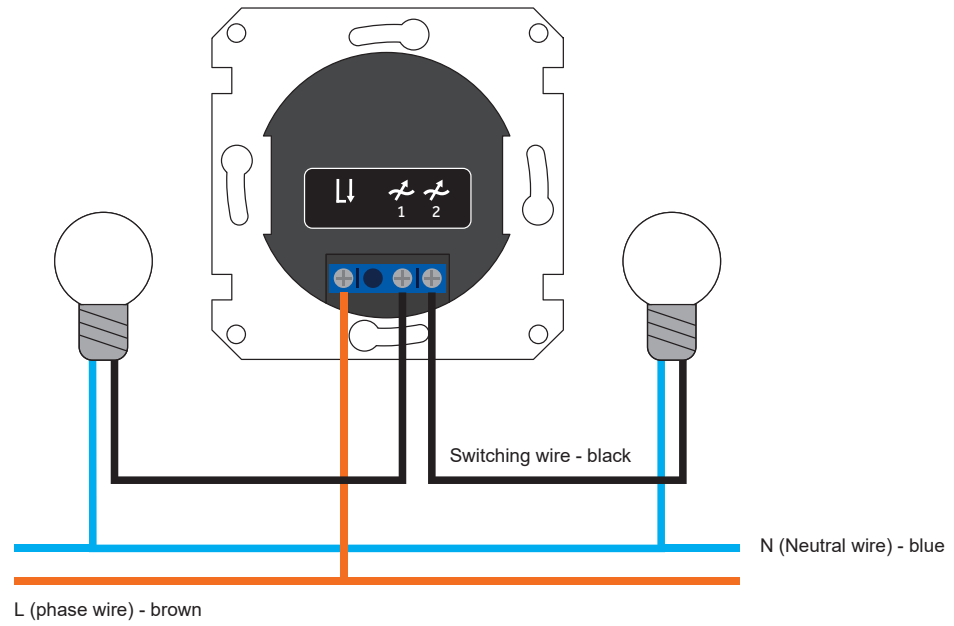


Figure B

Back





INSTRUCTION MANUAL LED DUO WALL DIMMER 2496

IMPORTANT!

- Always work SAFELY; before installing, turn off the power in the fuse box.
- This dimmer is NOT SUITABLE for 12V halogen lamps combined with an iron core wire wrapped transformer. The warranty is void if this combination is made nevertheless!

This led duo wall dimmer (230VAC/50Hz, 2 x 1-100W/VA) is suitable for dimming the following light sources:

- Dimmable (retrofit) LED (filament) light sources (230V, max 70W).
- Low voltage LED light sources combined with dimmable LED drivers (80W max).
- Incandescent and halogen light sources (230V, max 100W).
- 12V halogen light sources combined with dimmable electronic transformers (80W max).

CHARACTERISTICS OF THIS LED WALL DIMMER:

- Phase cut dimmer ('R,C').
- Per dimmer channel the desired dimming range can be set.
- The dimmer has a soft start for a favorable influence on the life span of the applied LED light sources.
- This dimmer is not designed for use in a two-way switch or a change-over circuit.
- Programming of the MIN and MAX setting per channel of the connected light source(s).
- Memory of the last dimming position.

INSTRUCTION FOR INSTALLATION (FIGURE B):

- Strip the wires sufficiently (about 5 mm) and insert them into the proper terminals of the dimmer (Figure B).
- Connect the dimmer according to the drawing;
- Secure the dimmer in the flush-mounted box, place the ring plates and temporarily tighten the nuts (2) for fixing the cover plate.
- Using the dimmer knob (1), set the minimum and maximum brightness of the light source per channel (see setting, b & c).
- Mount the frame, the cover plate (tighten the nuts firmly!) and the rotary knobs. Depending on the type of plate, first place the shaft adapters (3) on the dimmer knobs and then the rotary knobs.
- Turn the dimmer knob (1) for the desired dimming position and press it (briefly) to switch the dimmer off and on.

SETTING THE DIMMER (IMAGE A):

The setting is important to get an optimal dimming range and stable light image with the connected light source(s).

a) Switching on dimmer;

- Turn on the connected light source by pressing the dimmer button (1).
- Using the dimmer knob (1), set the connected light source to the desired brightness by turning the dimmer knob.

Program (SET) minimum brightness;

- Set the desired minimum brightness by turning the dimmer knob (1) counterclockwise.
- Press and hold the dimmer knob for 5 seconds (the light source goes off and on once).
- The minimum brightness level is stored in memory.

b) Program (SET) maximum brightness;

- Set the desired maximum brightness by turning the dimmer knob (1) clockwise.
- Press and hold the dimmer button for 5 seconds (the light source goes off and on 2x).
- The maximum brightness is stored in memory.

c) Erase (RESET) minimum and maximum brightness;

- When the connected light source is on turn the lamp off!
- Press and hold the dimmer button (1) for 8 seconds (the light source goes on and off).

The full control range of the connected light source is available again. Programming can be repeated at any time. If, after programming the minimum and maximum brightness, the light pattern is stable, the correct control range for the connected light source(s) has been found.

EQUIPMENT:

- Fitting screwdriver/voltage tester
- Stripping pliers, for stripping wires.